

# SPOTCHECK® PENETRANTS



**SPOTCHECK® is a red visible nondestructive test method, which provides for the detection of surface discontinuities (flaws) in ferrous and non-ferrous test materials.**

- ▶ *Ideal for applications where portability is required.*
- ▶ *Available in aerosol or liquid form.*
- ▶ *The vivid red color permits daylight inspection.*
- ▶ *Meets major military specifications.*
- ▶ *A complete line of cleaners and developers, as well as Water Wash or Post Emulsifiable penetrants, are available.*

## Benefits

SPOTCHECK is the most reliable and widely used penetrant inspection method that reveals cracks and other surface discontinuities in virtually any non-porous material.

SPOTCHECK's formulation, using a high concentration of quality dyes, together with high quality solvents, provides the *best possible dye penetrants* for finding the smallest and finest defects. Other products may skimp on dyes or use inferior solvents that cut costs. In doing so, indications do not appear as bright or vibrant and cracks can be missed. Some inferior solvents may also cause health hazards.

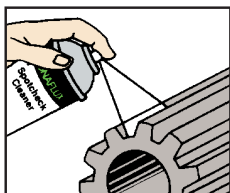
- ▶ Our developer's even spray pattern provides a uniform coating.
- ▶ Our SPOTCHECK products are the most widely used in the inspection of welds in a variety of industries.
- ▶ Dependability, consistency and safety should be the major concern in your inspection process – MAGNAFLUX® has it all.

## Applications

SPOTCHECK delivers accurate, reliable crack detection results in the following applications:

- ▶ Automobile Parts
- ▶ Off-Road Equipment
- ▶ Farm Equipment
- ▶ Welds
- ▶ Castings
- ▶ Forgings
- ▶ Leak Testing
- ▶ Pressure Vessels/Aircraft Maintenance
- ▶ Marine Construction/Maintenance
- ▶ Petroleum Pipelines
- ▶ Power Plant Inspections
- ▶ General Metalwork

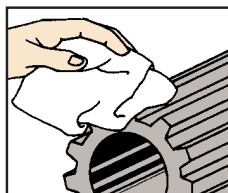
## How to use



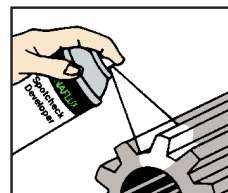
Preclean inspection area. Spray on Cleaner/Remover. Wipe off with cloth.



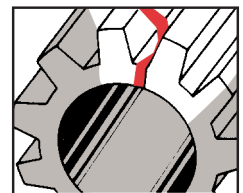
Apply Penetrant. Allow short penetration period.



Spray Cleaner/Remover on wiping towel and wipe surface clean.



Spray on thin, uniform film of Developer.



Inspect. Defects will show as bright red lines in white developer background.

## Penetrants

### SKL-SP1

#### Solvent Removable Penetrant

Most widely used, general purpose solvent removable penetrant. Good for rough surfaces and large parts.  
*Approved Developers:* SKD-S2 & ZP-5B  
*Approved Cleaner:* SKC-S

Part #:	Container Size:
01-5150-35	Case of 4 – 1 Gallon Containers
01-5150-40	5 Gallon Pail
01-5150-45	55 Gallon Drum
Also available in 16 oz. aerosol cans.	

### SKL-4C

#### Water Based Penetrant

Bright red in the daylight; fluorescent orange in UV light. Liquid oxygen compatible. For non-certified applications. Used as a leak detector and for inspection of plastic.  
*Approved Developer:* SKD-S2  
*Approved Cleaner:* Not Required

Part #:	Container Size:
01-5125-40	5 Gallon Pail
01-5125-45	55 Gallon Drum

### SKL-WP

#### Water Washable Penetrant

General purpose water washable penetrant.  
*Approved Developers:* SKD-S2 & ZP-5B  
*Approved Cleaner:* Not Required

Part #:	Container Size:
01-5182-35	Case of 4 – 1 Gallon Containers
01-5182-40	5 Gallon Pail
01-5182-45	55 Gallon Drum
Also available in 16 oz. aerosol cans.	



## Cleaners/Removers

### SKC-S

#### Solvent Cleaner

The recommended, general purpose cleaner/remover. Non-Chlorinated. Flammable. Meets major requirements for major specifications.

Part #:	Container Size:
01-5750-35	Case of 4 – 1 Gallon Containers
01-5750-40	5 Gallon Pail
01-5750-45	55 Gallon Drum
Also available in 16 oz. aerosol cans.	

### SKC-HF

#### Solvent Cleaner

High Flash point. Low odor cleaner/remover. Meets sulfur and chlorine requirements of major specifications.

Part #:	Container Size:
01-5725-40	5 Gallon Pail
01-5725-45	55 Gallon Drum
Also available in 16 oz. aerosol cans.	

## Developers

### SKD-S2

#### Solvent Developer

General purpose solvent developer.

Part #:	Container Size:
01-5352-35	Case of 4 – 1 Gallon Containers
01-5352-40	5 Gallon Pail
01-5352-45	55 Gallon Drum
Also available in 16 oz. aerosol cans.	

### ZP-5B

#### Aqueous Water Suspensible Developer

General purpose water suspensible developer.

Part #:	Container Size:
01-3341-81	25 lb. Container

# SPOTCHECK® Kits



- ▶ SPOTCHECK visible penetrant kits quickly locate surface cracks.
- ▶ Easy to transport for field inspections.
- ▶ No UV light required because of vivid red color.
- ▶ Includes SKL-SP1 penetrant, SKC-S cleaner and SKD-S2 Developer.



## SK-416 Portable Kit (16 oz.)

**Part #:**

01-5970-48

**Includes:**

1 can of SKL-SP1, 2 cans of SKC-S, 1 can of SKD-S2, Heavy Duty Wiping Cloth, Paint Marker, Scrubs™ Hand Towels, Portable Plastic Case and Instructions.

## SK-816 General Purpose Kit (16 oz.)

**Part #:**

01-5920-48

**Includes:**

2 cans of SKL-SP1, 2 cans of SKD-S2 and 4 cans of SKC-S, Heavy Duty Wiping Cloth, Paint Marker, Scrubs™ Hand Towels, Portable Plastic Case and Instructions.

# SPOTCHECK® Specification Conformance Chart

Specification	Penetrants			Cleaners		Developers	
	SKL-SP1	SKL-WP	SKL-4C	SKC-S	SKC-HF	SKD-S2	ZP-5B
NAVSEA T9074-AS-GIB-010/271	X	X		X	X	X	X
MIL-STD-2132	X	X		X	X	X	X
AECL	X	X		X	X	X	X
AMS-2644	X	X	X	X	X	X	X
ASME B & PV Code, Sec. V	X	X	X	X	X	X	X
ASTM E 165	X	X	X	X	X	X	X
ASTM E-1417	X	X	X	X	X	X	X
Boeing BAC 5423 PSD 6-46 or 8-4	X	X		X		X	X
General Electric P50YP107	X	X		X	X	X	X
Boeing PS-21202	X			X	X	X	X
NAVSEA 250-1500-1	X			X	X	X	