

ERSATZTEILE LISTE SPARE PARTS LIST

FÜR ROTAX MOTOR
FOR ROTAX ENGINE

TYPE 535

AUSFÜHRUNG: C
CONFIGURATION: C



Nr.
No. **645**

AUSGABE
EDITION 04 1988

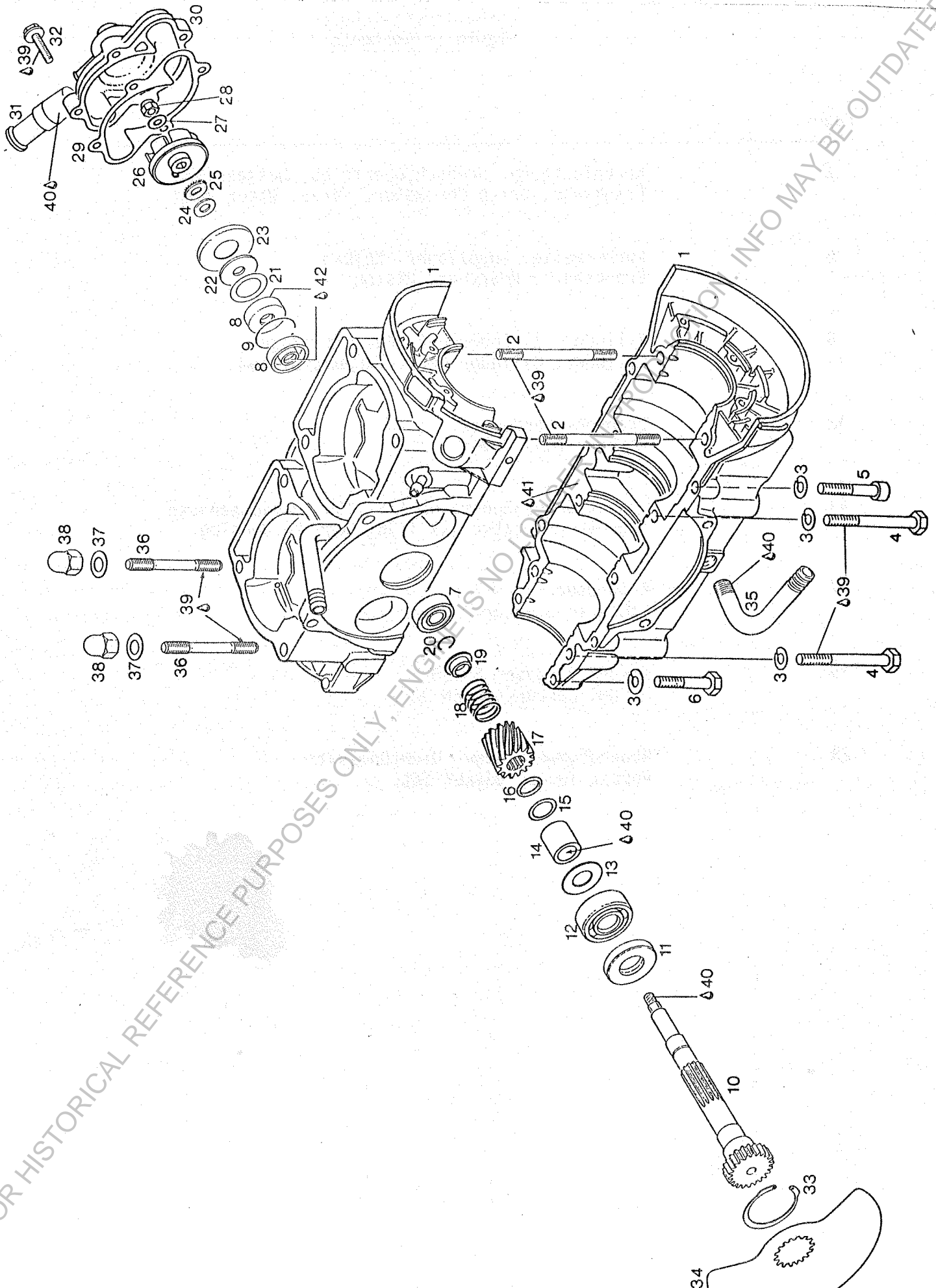
FOR HISTORICAL REFERENCE PURPOSES ONLY, ENGINE IS NO LONGER IN PRODUCTION. INFO MAY BE OUTDATED!

Inhaltsverzeichnis
Table of Contents

Page

| | |
|----|--|
| 2 | Kurbelgehäuse, Drehschiebertrieb, Wasserpumpe Crankcase, Drive for Rotary Valve, Water Pump |
| 6 | Kurbelwelle, Kugellager, Kolben Crankshaft, Bearings, Piston |
| 9 | Zylinder, Zylinderkopf, Auspuffanlage Cylinder, Cylinder Head, Exhaust System |
| 12 | Drehschieberdeckel Rotary Valve Cover |
| 14 | Magnetzündler-Generator 12V 110W, Magnetgehäuse Magneto Generator 12V 110W, Magneto Housing |
| 17 | E-Starter Electric Starter |
| 19 | MIKUNI Vergaser BN 38 MIKUNI carburetor BN 38 |
| 23 | Reparaturwerkzeuge, Dichtungssatz Repair Tools, Gasket Set |

KURBELGEHAEUSE, DREHSCHIEBERTRIEB, WASSERPUMPE
CRANKCASE, DRIVE FOR ROTARY VALVE, WATER PUMP



| BILD-NR. | TEILE-NR. | B E Z E I C H N U N G | STUECK |
|----------|-----------|-----------------------|--------|
| ILL. NO. | PART NO. | D E S C R I P T I O N | QTY. |

| | | | |
|---------|---------|---|----|
| ✓ 1 - 6 | 995 197 | GEHAEUSE KPL. / CRANKCASE ASSY.,..... | 1 |
| ✓ 2 | 841 250 | STIFTSCHRAUBE M8X81/27 / STUD M8X81/27... ANZUGSDREHMOMENT 6 NM TIGHTENING TORQUE 6 NM (4,5 FT.LB.) | 2 |
| ✓ 3 | 945 752 | FEDERRING A8 DIN 128 / LOCK-WASHER A8..... | 12 |
| ✓ 4 | 841 301 | SK-SCHRAUBE M8X65 DIN 931 HEX.SCREW M8X65..... ANZUGSDREHMOMENT 20 NM TIGHTENING TORQUE 20 NM (15 FT.LB.) | 6 |
| ✓ 5 | 840 631 | ZYL.SCHRAUBE M8X40 DIN 912 ALLEN SCREW M8X40..... ANZUGSDREHMOMENT 20 NM TIGHTENING TORQUE 20 NM (15 FT.LB.) | 4 |
| 6 | 940 631 | SK-SCHRAUBE M8X45 DIN 931 HEX.SCREW M8X45..... ANZUGSDREHMOMENT 20 NM TIGHTENING TORQUE 20 NM (15 FT.LB.) | 2 |
| ✓ 7 | 932 797 | RK-LAGER 6201-Z BALL BEARING 6201-Z, 12-32-10..... | 1 |
| 8 | 850 710 | WD-RING A 10X30X8 / OIL SEAL 10X30X8..... | 2 |
| 9 | 827 530 | STUETZRING / DISTANCE RING..... | 1 |
| 10 | 937 962 | DREHSCHIEBERWELLE / ROTARY VALVE SHAFT... | 1 |
| 11 | 930 580 | WD-RING A 20X40X7 / OIL SEAL 20X40X7..... | 1 |
| 12 | 932 030 | RK-LAGER 6203 C3 BALL BEARING 6203 C3, 17-40-12..... | 1 |
| 13 | 827 510 | SCHEIBE 15,3/32,5/0,5 SHIM 15,3/32,5/0,5..... | 1 |
| 14 | 847 280 | DISTANZHUELSE 15,2/22/24,5 SPACER 15,2/22/24,5..... | 1 |
| 15 | 927 440 | AUSGLEICHSCHEIBE 15,1/22,5/0,5 SHIM 15,1/22,5/0,5..... | 1 |
| 16 | 831 500 | O-RING 14-3 NBR 70-80 SH / O-RING 14-3... | 1 |
| 17 | 935 730 | DREHSCHIEBERRAD 14 Z ROTARY VALVE GEAR 14 T.,..... | 1 |
| 18 | 938 810 | DRUCKFEDER DM18 D2 L25,1 COMPRESSION SPRING 25,1 MM..... | 1 |
| 19 | 827 430 | FEDERTELLER / SPRING HOLDING CUP..... | 1 |

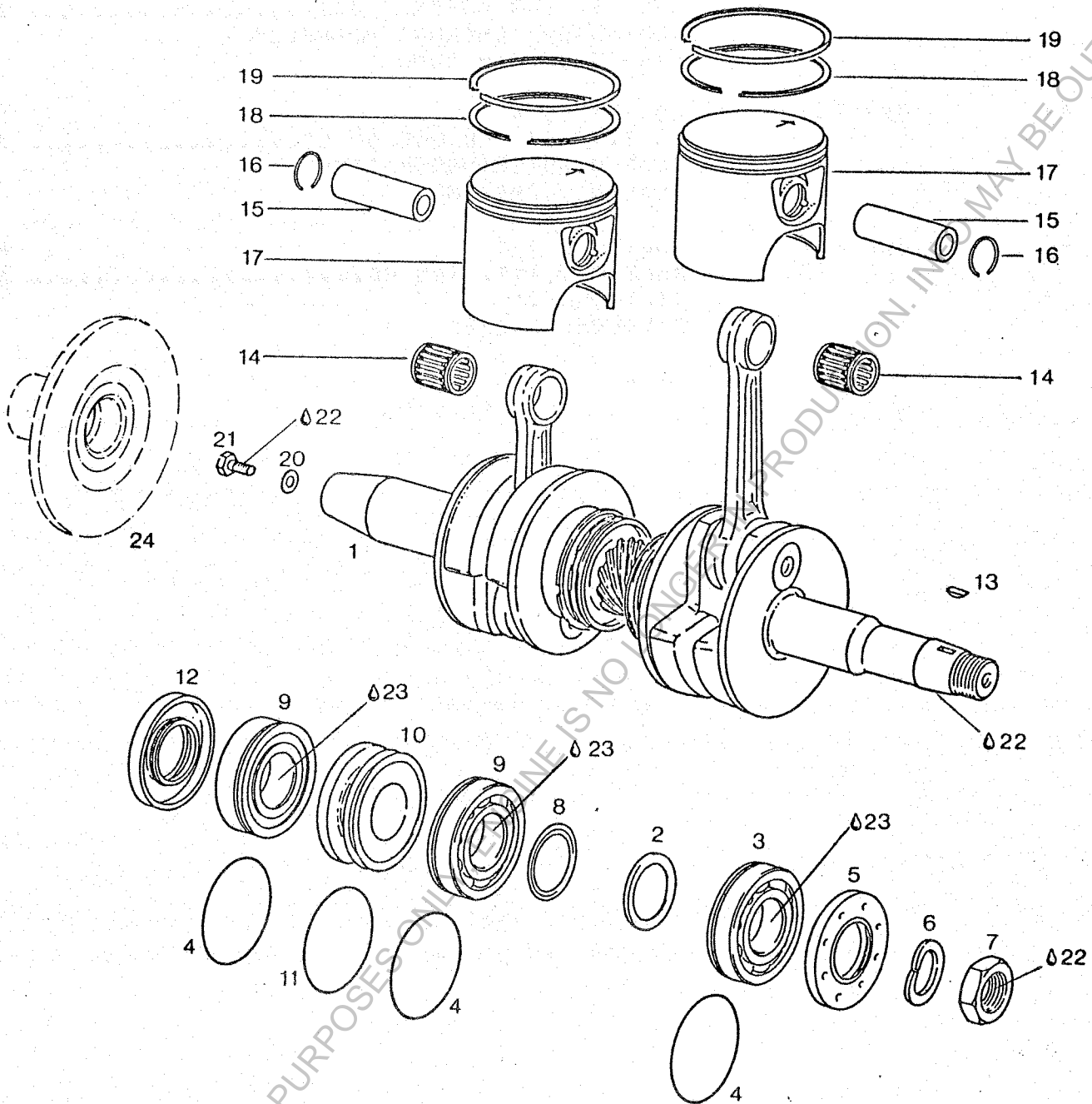
FOR HISTORICAL REFERENCE PURPOSES ONLY. ENGINE IS NO LONGER IN PRODUCTION. INFO MAY BE OUTDATED!

| BILD-NR. ILL. NO. | TEILE-NR. PART NO. | B E Z E I C H N U N G D E S C R I P T I O N | STUECK QTY. |
|----------------------|-----------------------|--|-----------------|
| 20 | 845 160 | SPRENGRING 12 DIN 9045 / CIRCLIP 12..... | 1 |
| 21 | 944 462 | AUSGLEICHSCHEIBE 20,5/30/0,5 SHIM 20,5/30/0,5..... | 1 |
| 22 | 850 890 | DICHTSCHEIBE 9,5/30,5/2 RUBBER WASHER 9,5/30,5/2..... | 1 |
| 23 | 827 970 | HALTESCHEIBE / SUPPORTING PLATE..... | 1 |
| 24 | 227 945 | ANLAUFSCHIEBE 8,1/15/0,5 THRUST-WASHER 8,1/15/0,5..... | 1 |
| 25 | 227 155 | REIBSCHEIBE / FRICTION WASHER..... | 1 |
| 26 | 922 035 | LAUFRAD / IMPELLER..... | 1 |
| 27 | 244 211 | SCHEIBE 6,4 DIN 134 / WASHER 6,4..... | 1 |
| 28 | 842 042 | SICHERUNGSMUTTER N M6 DIN 930 LOCK NUT M6..... ANZUGSDREHMOMENT 6 NM TIGHTENING TORQUE 6 NM (4,5 FT.LB.) | 1 |
| 29 | 831 612 | DICHTUNG / GASKET..... | 1 |
| 30 - 31 | 222 069 | WASSERPUMPENGEHAEUSE KPL. WATER PUMP HOUSING ASSY.,..... | 1 |
| 31 | 222 230 | ZULAUFROHR / INLET TUBE..... | 1 |
| 32 | 841 540 | TAPTITE-SCHRAUBE M6X25 TAPTITE-SCREW M6X25..... ANZUGSDREHMOMENT 6 NM TIGHTENING TORQUE 6 NM (4,5 FT.LB.) | 4 |
| 33 | 845 260 | SEEGER-V-RING J 40X1,75 V SNAP RING 40X1,75..... | 1 |
| 34 | 924 207 | DREHSCHIEBER / ROTARY VALVE 151 DEGR.,... | 1 |
| 35 | 924 240 | WINKELROHR M12X1,5 / ANGULAR TUBE M12X1,5 | 1 |
| 36 | 841 355 | STIFTSCHRAUBE M8X79 / STUD M8X79..... | 8 |
| 37 | 250 311 | SCHEIBE 8,4 DIN 125 / WASHER 8,4..... | 8 |
| 38 | 842 321 | HUTMUTTER M8 / CAP NUT M8..... ANZUGSDREHMOMENT 20 NM TIGHTENING TORQUE 20 NM (15 FT.LB.) | 8 |
| 39 | 899 785 | SCHRAUBENSICHERUNG NIEDRIGFEST LOCTITE 221 VIOLET 10 CC.,..... LOW STRENGTH BOND | N BED AS REQ |

| BILD-NR. ILL. NO. | TEILE-NR. PART NO. | B E Z E I C H N U N G D E S C R I P T I O N | STUECK QTY. |
|----------------------|-----------------------|---|-----------------|
| 40 | 899 783 | LOCTITE 648 GRUEN LOCTITE 648 GREEN 5 GR.,..... SCHRAUBENSICHERUNG HOCHFEST HIGH STRENGTH BOND | N BED AS REQ |
| 41 | 899 784 | LOCTITE 574 LOCTITE 574 ORANGE 50 CC.,..... FLAECHENDICHTUNGSMITTEL SEALING COMPOUND | N BED AS REQ |
| 42 | 897 161 | MOLYKOTE 111 MOLYKOTE 111, 100 GR.,..... SILIKONFETT SILICONE GREASE | N BED AS REQ |

FOR HISTORICAL REFERENCE PURPOSES ONLY, ENGINE IS NO LONGER IN PRODUCTION. INFO MAY BE OUTDATED!

KURBELWELLE, KUGELLAGER, KOLBEN
CRANKSHAFT, BEARINGS, PISTON



| BILD-NR. ILL. NO. | TEILE-NR. PART NO. | B E Z E I C H N U N G D E S C R I P T I O N | STUECK QTY. |
|----------------------|-----------------------|--|----------------|
| 1 | 995 167 | KURBELWELLE KPL. / CRANKSHAFT ASSY..... | 1 |
| 2 | 827 440 | RADIUSSCHEIBE 30,5/42/2 DISTANCE RING 30,5/42/2..... | 1 |
| 3 | 932 085 | RK-LAGER 6306 N TNH C3 BALL BEARING 6306, 30-72-19..... | 1 |

| BILD-NR. | TEILE-NR. | B E Z E I C H N U N G | STUECK |
|----------|-----------|-----------------------|--------|
| ILL. NO. | PART NO. | D E S C R I P T I O N | QTY. |

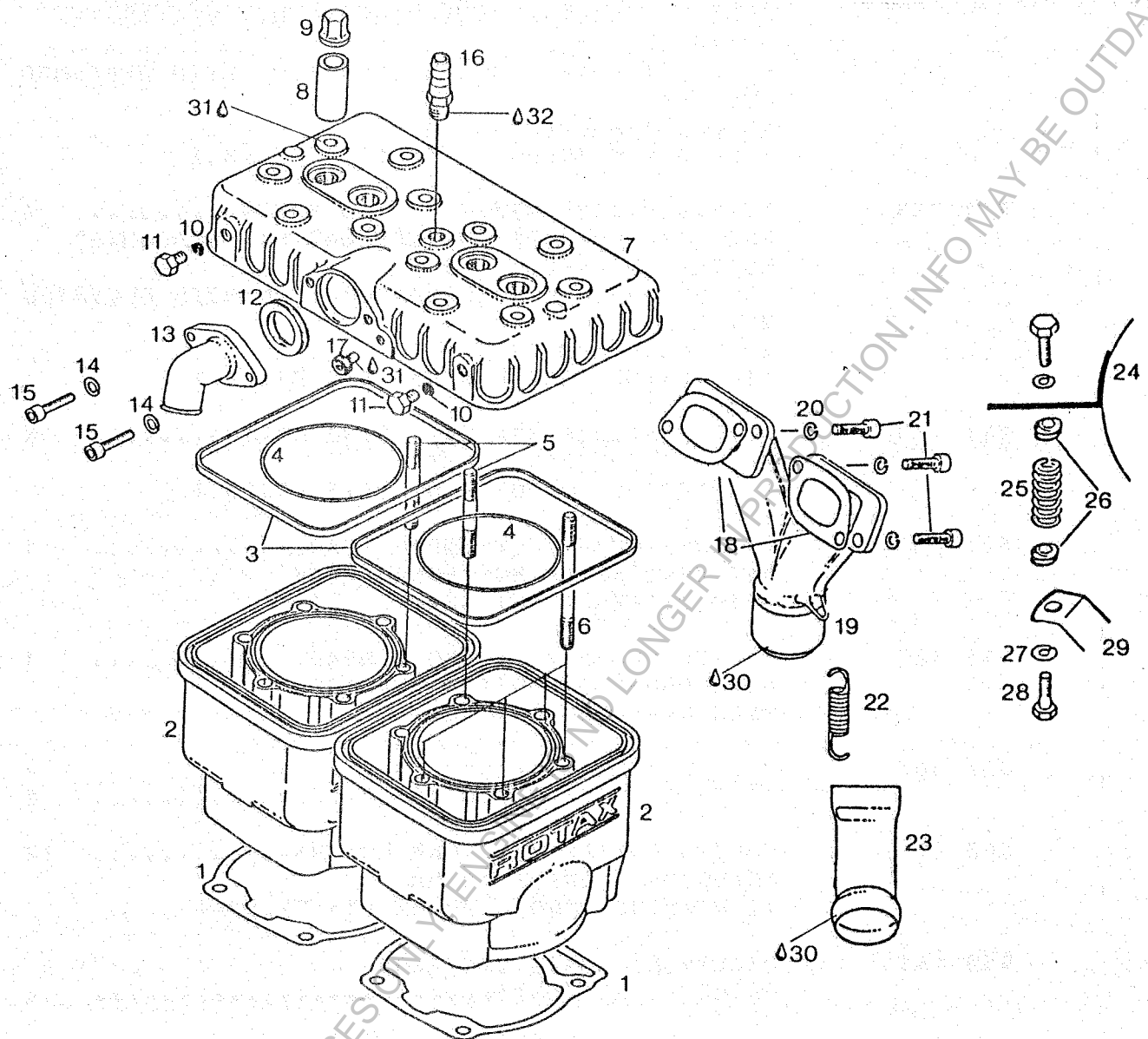
| | | | |
|---------|---------|--|---|
| 4 | 830 350 | O-RING 60-2 NBR 70-80 SH / O-RING 60-2... | 3 |
| 5 | 830 747 | WD-RING AS 30X62X7/7,5 OIL SEAL 30X62X7/7,5..... | 1 |
| 6 | 945 759 | SPERRKANTRING 22 DIN 128 A LOCK WASHER 22..... | 1 |
| 7 | 842 230 | SK-MUTTER M22X1,5 SW 30 HEX. NUT M22X1,5..... ANZUGSDREHMOMENT 140 NM TIGHTENING TORQUE 140 NM (103 FT.LB.) | 1 |
| 8 | 827 760 | RADIUSSCHEIBE 35,5/47/2 DISTANCE RING 35,5/47/2..... | 1 |
| 9 | 832 231 | RK-LAGER 6207 N TNH C3 BALL BEARING 6207 N TNH,35-72-17..... | 2 |
| 10 | 830 292 | LABYRINTHGEHAEUSE / LABYRINTH SLEEVE..... | 1 |
| 11 | 830 370 | O-RING 63-2,5 NBR 70-80 SH O-RING 63-2,5..... | 1 |
| 12 | 831 950 | WD-RING AS 35X72X7/8,5 OIL SEAL 35X72X7/8,5..... | 1 |
| 13 | 246 050 | SCHEIBENFEDER 3X3,7 DIN 5838 WOODRUFF KEY 3X3,7..... | 1 |
| 14 | 932 904 | KOLBENBOLZENKAEFIG K 18X22X22 NEEDLE CAGE 18X22X22..... | 2 |
| 15 | 916 185 | KOLBENBOLZEN 18X11X58,7 PISTON PIN 18X11X58,7..... | 2 |
| 16 | 945 735 | NULLHAKENRING 18 / CIRCLIP 18..... | 4 |
| 17 - 19 | 995 280 | KOLBEN KPL. 72 MM / PISTON ASSY. 72,0 MM. MIT 2 RINGEN, STANDARD WITH 2 RINGS, STANDARD | 2 |
| 17 - 19 | 995 286 | KOLBEN KPL. 72,25 MM PISTON, ASSY. 72,25 MM..... MIT 2 RINGEN, 1. SCHLIFF WITH 2 RINGS, 1ST OVERSIZE | 2 |
| 17 - 19 | 995 237 | KOLBEN KPL. 72,5 MM PISTON ASSY. 72,5 MM..... MIT 2 RINGEN, 2. SCHLIFF WITH 2 RINGS, 2ND OVERSIZE | 2 |
| 18 | 915 350 | R-RING IS 2-72/65,9X2 RECTANGULAR RING 72,0 MM..... STANDARD STANDARD | 2 |

FOR HISTORICAL REFERENCE PURPOSES ONLY. ENGINE PRODUCTION INFO MAY BE OUTDATED!

| BILD-NR. | TEILE-NR. | B E Z E I C H N U N G | STOECK |
|----------|-----------|--|-----------------|
| ILL. NO. | PART NO. | D E S C R I P T I O N | QTY. |
| 18 | 915 851 | R-RING IS 2-72,25/66,15X2 RECTANGULAR RING 72,25 MM..... 1. SCHLIFF 1ST OVERSIZE | 2 |
| 18 | 915 852 | R-RING IS 2-72,5/66,4X2 RECTANGULAR RING 72,5 MM..... 2. SCHLIFF 2ND OVERSIZE | 2 |
| 19 | 215 235 | ETL-RING IS2-72/65,6X2 SEMI-TRAPEZ RING 72,00 MM..... STANDARD STANDARD | 2 |
| 19 | 215 236 | ETL-RING IS2-72,25/65,85X2 SEMI-TRAPEZ RING 72,25 MM..... 1. SCHLIFF 1ST OVERSIZE | 2 |
| 19 | 215 237 | ETL-RING IS2-72,5/66,1X2 SEMI-TRAPEZ RING 72,50 MM..... 2. SCHLIFF 2ND OVERSIZE | 2 |
| 20 | 827 780 | SCHEIBE 13/39/5 / WASHER 13/39/5..... | 1 |
| 21 | 841 651 | SK-SCHRAUBE 1/2-20UNFX30 HEX. SCREW 1/2-20UNFX30..... ANZUGSDREHMOMENT 60 NM TIGHTENING TORQUE 60 NM | 1 |
| 22 | 899 785 | SCHRAUBENSICHERUNG NIEDRIGFEST LOCTITE 221 VIOLET 10 CC.,..... LOW STRENGTH BOND | N BED AS REQ |
| 23 | 297 431 | LOCTITE ANTI-SEIZE 76710 LOCTITE ANTI-SEIZE 10 GR.,..... ZUR VERHINDERUNG VON PASSUNGSROST TO PREVENT METAL GALLING | N BED AS REQ |
| 24 | | SCHWUNGRAD, NICHT ALS ERSATZTEIL LIEFERBAR FLYWHEEL, NOT AVAILABLE AS SPARE PART | 1 |

FOR HISTORICAL REFERENCE PURPOSES ONLY. NO LONGER IN PRODUCTION. INFO MAY BE OUTDATED!

ZYLINDER, ZYLINDERKOPF, AUSPUFFANLAGE
CYLINDER, CYLINDER HEAD, EXHAUST SYSTEM



| BILD-NR. ILL. NO. | TEILE-NR. PART NO. | B E Z E I C H N U N G D E S C R I P T I O N | STUECK QTY. |
|----------------------|-----------------------|--|----------------|
| 1 | 831 835 | DICHTUNG / GASKET..... | 2 |
| 2 | 823 955 | ZYLINDER MIT BUECHSE CYLINDER WITH SLEEVE..... | 2 |
| 3 | 850 040 | SCHLAUCHRING 152,5X2,5X5 RUBBER RING 152,5X2,5X5..... | 2 |
| 4 | 831 790 | O-RING 78-2 SI 60-70 SH / O-RING 78-2..... | 2 |

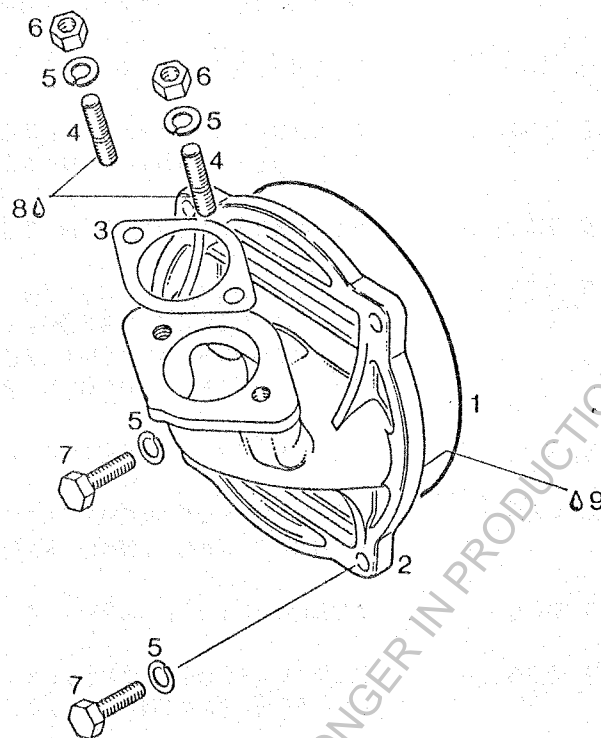
| | | | |
|----|---------|---|----|
| 5 | 240 090 | STIFTSCHRAUBE M8X50/20 / STUD M8X50/20... FUER ZYLINDERKOPFAUSFUEHRUNG MIT VERTIEFTER MUTTERNAUFLAGE FOR CYLINDER-HEAD-CONFIGURATION WITH DEEPENED NUT SEAT ANZUGSDREHMOMENT 6 NM TIGHTENING TORQUE 6 NM (4,5 FT.LB.) | 4 |
| 5 | 841 355 | STIFTSCHRAUBE M8X79 / STUD M8X79..... FUER ZYLINDERKOPFAUSFUEHRUNG MIT ERHOEHTER MUTTERNAUFLAGE FOR CYLINDER-HEAD-CONFIGURATION WITH ELEVATED NUT SEAT ANZUGSDREHMOMENT 6 NM TIGHTENING TORQUE 6 NM (4,5 FT.LB.) | 4 |
| 6 | 841 430 | STIFTSCHRAUBE M8X104 / STUD M8X104..... ANZUGSDREHMOMENT 6 NM TIGHTENING TORQUE 6 NM (4,5 FT.LB.) | 8 |
| 7 | 823 882 | ZYLINDERKOPF / CYLINDER HEAD..... MIT VERTIEFTER MUTTERNAUFLAGE WITH DEEPENED NUT SEAT | 1 |
| 7 | 913 137 | ZYLINDERKOPF / CYLINDER HEAD..... MIT ERHOEHTER MUTTERNAUFLAGE WITH ELEVATED NUT SEAT | 1 |
| 8 | 847 462 | DISTANZROHR 8,4/15/27 DISTANCE SLEEVE 8,4/15/27..... | 8 |
| 9 | 842 471 | BUNDHUTMUTTER M8 / CAP NUT M8..... ANZUGSDREHMOMENT 20 NM TIGHTENING TORQUE 20 NM (15 FT.LB.) | 12 |
| 10 | 950 141 | DICHTRING A8X13 DIN 7603 GASKET RING A8X13..... | 2 |
| 11 | 940 251 | SK-SCHRAUBE M8X9 DIN 933 HEX. SCREW M8X9..... ANZUGSDREHMOMENT 14 NM TIGHTENING TORQUE 14 NM (10 FT.LB.) | 2 |
| 12 | 230 980 | DICHTUNG / GASKET..... | 1 |
| 13 | 922 065 | ABLAUFKRUEMMER / WATER OUTLET SOCKET..... | 1 |
| 14 | 945 751 | FEDERRING A6 DIN 128 / LOCK WASHER A6..... | 2 |
| 15 | 241 231 | ZYL.SCHRAUBE M6X16 DIN 6912 ALLEN SCREW M6X16..... ANZUGSDREHMOMENT 10 NM TIGHTENING TORQUE 10 NM (7 FT.LB.) | 2 |
| 16 | 840 445 | SCHLAUCHNIPPEL 12/8 / HOUSE NIPPLE 12/8.. | 1 |

| BILD-NR. | TEILE-NR. | B E Z E I C H N U N G | STUECK |
|----------|-----------|-----------------------|--------|
| ILL. NO. | PART NO. | D E S C R I P T I O N | QTY. |

| | | | |
|----|---------|--|-----------------|
| 17 | 240 480 | VERSCHLUSSSCHRAUBE 1/8-27NPT PLUG SCREW 1/8-27NPT..... | 1 |
| 18 | 850 300 | DICHTUNG / GASKET..... | 2 |
| 19 | 879 852 | AUSPUFFKRUEMMER KPL. EXHAUST MANIFOLD ASSY.,..... | 1 |
| 20 | 945 752 | FEDERRING A8 DIN 128 / LOCK-WASHER A8.... | 4 |
| 21 | 840 991 | ZYL.SCHRAUBE M8X30 DIN 912 ALLEN SCREW M8X30..... ANZUGSDREHMOMENT 20 NM TIGHTENING TORQUE 20 NM (15 FT.LB.) | 4 |
| 22 | 938 790 | ZUGFEDER / SPRING..... | 6 |
| 23 | 879 940 | VERBINDUNGSROHR KPL. CONNECTING TUBE ASSY.,..... | 1 |
| 24 | 879 840 | AUSPUFFTOPF KPL. / MUFFLER ASSY.,..... | 1 |
| 25 | 239 628 | KUPPL.FEDER DM14,8 D2,5 L32,4 CLUTCH SPRING 32,4..... | 3 |
| 26 | 842 330 | FEDERMUTTER M8 / SPRING NUT M8..... | 6 |
| 27 | 945 752 | FEDERRING A8 DIN 128 / LOCK-WASHER A8.... | 6 |
| 28 | 940 581 | SK-SCHRAUBE M8X16 DIN 933 HEX. SCREW M8X16..... | 6 |
| 29 | 951 070 | WINKELLASCHE / ANGULAR SUPPORT..... | 2 |
| 30 | 297 431 | LOCTITE ANTI-SEIZE 76710 LOCTITE ANTI-SEIZE 10 GR.,..... ZUR VERHINDERUNG VON PASSUNGSROST TO PREVENT METAL GALLING | N BED AS REQ |
| 31 | 297 386 | SILASTIC 732 RTV SILASTIC 732 RTV / 100 GR.,..... 100 GR., | N BED AS REQ |
| 32 | 899 785 | SCHRAUBENSICHERUNG NIEDRIGFEST LOCTITE 221 VIOLET 10 CC.,..... LOCTITE 221, 10 CCM LOW STRENGTH BOND | N BED AS REQ |

FOR HISTORICAL REFERENCE PURPOSES ONLY. ENGINEERING INFORMATION MAY BE OUTDATED!

DREHSCHIEBERDECKEL
ROTARY VALVE COVER



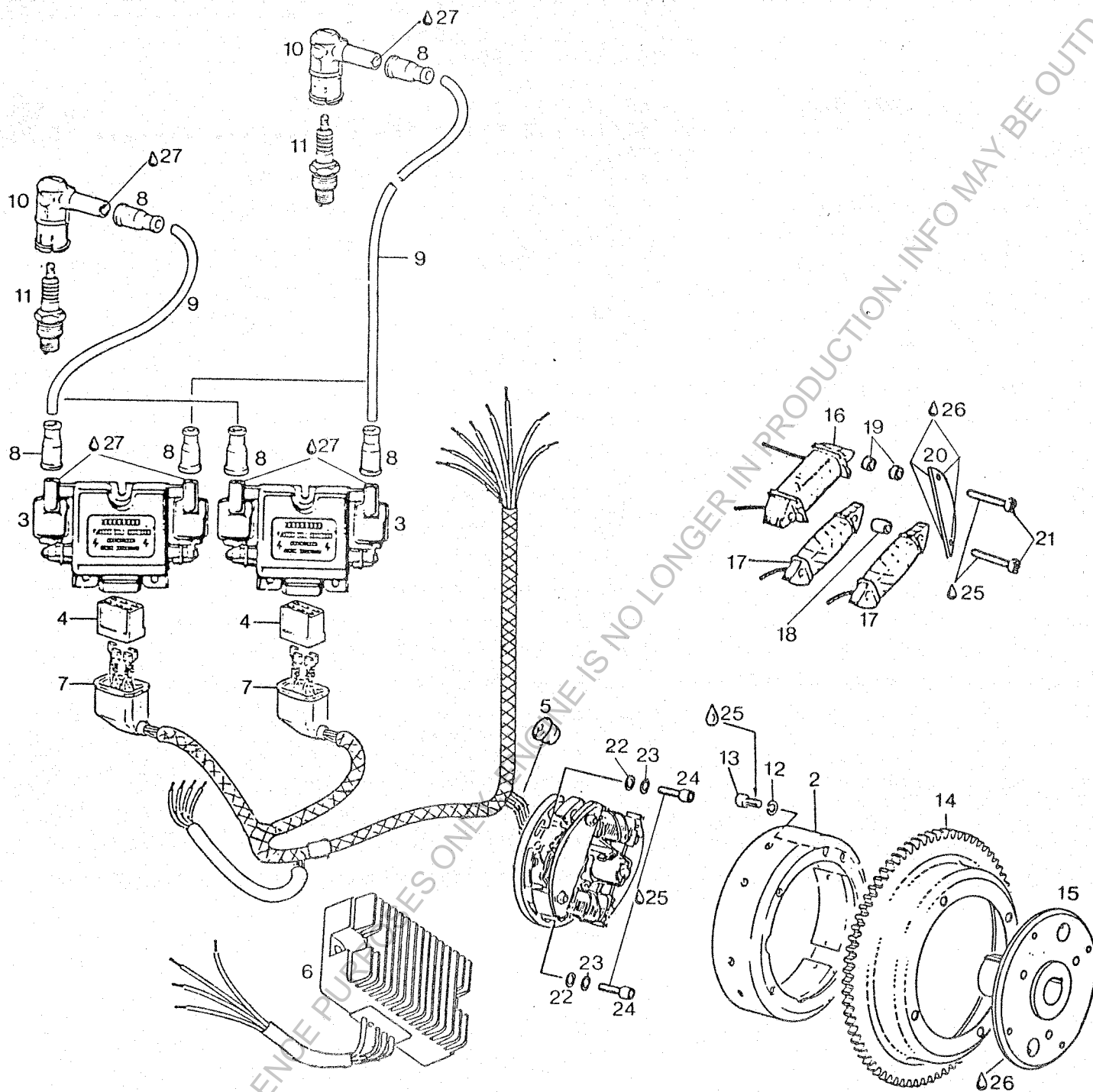
| BILD-NR. ILL. NO. | TEILE-NR. PART NO. | B E Z E I C H N U N G D E S C R I P T I O N | STUECK QTY. |
|----------------------|-----------------------|--|----------------|
| 1 | 831 360 | O-RING 132-1,7 NBR 70-80 SH O-RING 132-1,7..... | 1 |
| 2 | 911 137 | DREHSCHIEBERDECKEL / ROTARY VALVE COVER.. | 1 |
| 3 | 850 372 | DICHTUNG 39 MM / GASKET 39 MM..... | 1 |
| 4 | 940 171 | STIFTSCHRAUBE M8X19,5/13 STUD M8X19,5/13..... ANZUGSDREHMOMENT 6 NM TIGHTENING TORQUE 6 NM (4,5 FT.LB.) | 2 |
| 5 | 945 752 | FEDERRING A8 DIN 128 / LOCK-WASHER A8.... | 6 |
| 6 | 242 201 | SK-MUTTER M8 DIN 934 / HEX. NUT M8..... ANZUGSDREHMOMENT 20 NM TIGHTENING TORQUE 20 NM (15 FT.LB.) | 2 |
| 7 | 940 591 | SK-SCHRAUBE M8X20 DIN 933 HEX.SCREW M8X20..... ANZUGSDREHMOMENT 20 NM TIGHTENING TORQUE 20 NM (15 FT.LB.) | 4 |

| BILD-NR. | TEILE-NR. | B E Z E I C H N U N G | STUECK |
|----------|-----------|---|-----------------|
| ILL. NO. | PART NO. | D E S C R I P T I O N | QTY. |
| 3 | 399 785 | SCHRAUBENSICHERUNG NIEDRIGFEST LOCTITE 221 VIOLET 10 CC.,..... LOCTITE 221, 10 GCM., LOW STRENGTH BOND | N BED AS REQ |

| | | | |
|---|---------|--|-----------------|
| 9 | 297 386 | SILASTIC 732 RTV SILASTIC 732 RTV / 100 GR.,..... 100 GR., | N BED AS REQ |
|---|---------|--|-----------------|

FOR HISTORICAL REFERENCE PURPOSES ONLY. ENGINE IS NO LONGER IN PRODUCTION. INFO MAY BE OUTDATED!

MAGNETZUENDER-GENERATOR 12V 110W, MAGNETGEHAEUSE
MAGNETO GENERATOR 12V 110W, MAGNETO HOUSING



| BILD-NR. ILL. NO. | TEILE-NR. PART NO. | B E Z E I C H N U N G D E S C R I P T I O N | STUECK QTY. |
|----------------------|-----------------------|--|----------------|
| 1 - 4 | 993 924 | MZ-GENERATOR SCPK422 12V 110W MAGNETO GENERATOR 12V 110W..... | 1 |
| 1 | 993 929 | ANKERPLATTE KPL. / ARMATURE PLATE ASSY.,, | 1 |

| BILD-NR. ILL. NO. | TEILE-NR. PART NO. | B E Z E I C H N U N G D E S C R I P T I O N | STUECK QTY. |
|----------------------|-----------------------|--|----------------|
|----------------------|-----------------------|--|----------------|

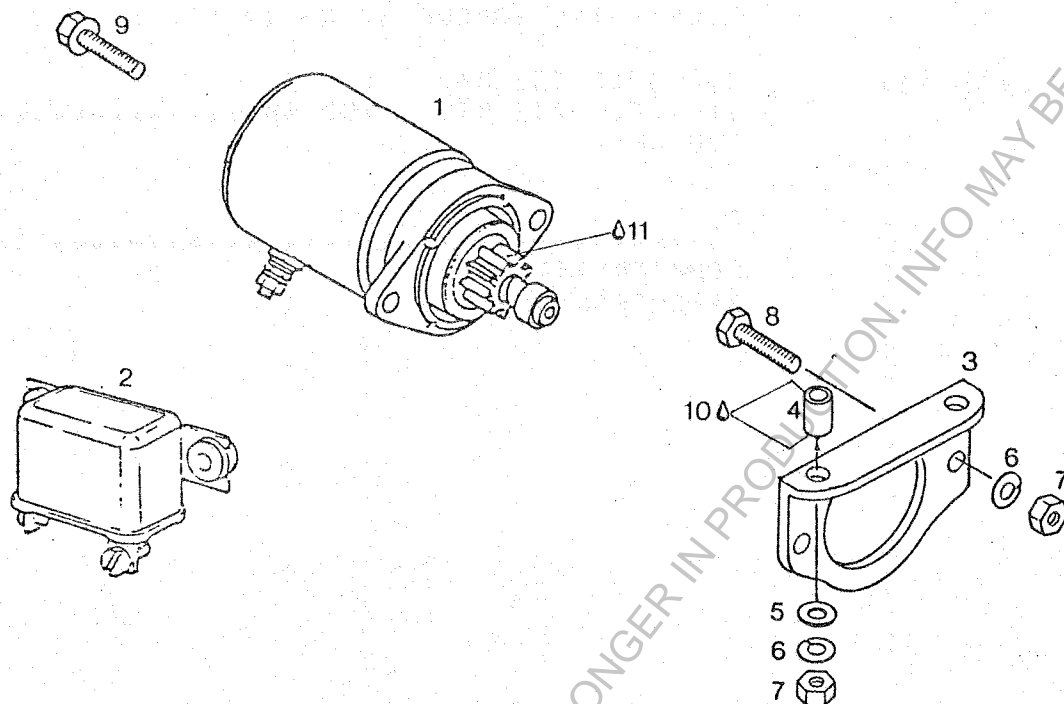
| | | | |
|----|---------|--|---|
| 2 | 993 500 | MAGNETRING / MAGNETO RING ALONE..... | 1 |
| 3 | 993 033 | ELEKTRONIKBOX / ELECTRONIC BOX..... | 2 |
| 4 | 865 453 | STECKERGEHAEUSE / CONNECTOR HOUSING..... | 2 |
| 5 | 960 287 | LEITUNGSTUELLE 20,5/9 CABLE GROMMET 20,5/9..... | 1 |
| 6 | 264 870 | DREIPHASEN-REGLERGLEICHRICHTER RECTIFIER REGULATOR..... | 1 |
| 7 | 960 791 | SCHUTZKAPPE / PROTECTION CAP..... | 2 |
| 8 | 960 550 | REGENSCHUTZKAPPE / PROTECTION CAP..... | 8 |
| 9 | 964 015 | ZUENDLEITUNG 265 MM IGNITION CABLE 265 MM..... | 4 |
| 10 | 983 409 | ENTSTOERSTECKER SHIELDED SPARK PLUG CONNECTOR..... | 4 |
| 11 | 897 050 | ZUENDKERZE 14 NGK B8ES SPARK PLUG 14 NGK B8ES..... ANZUGSDREHMOMENT 27 NM, IM KALTEN ZUSTAND TIGHTENING TORQUE 27 NM (20 FT.LB.), WHEN COLD | 4 |
| 12 | 945 751 | FEDERRING A6 DIN 128 / LOCK WASHER A6..... | 4 |
| 13 | 840 370 | ZYL.SCHRAUBE M6X11,5 ALLEN SCREW M6X11,5..... ANZUGSDREHMOMENT 10 NM TIGHTENING TORQUE 10 NM (7 FT.LB.) | 4 |
| 14 | 935 955 | STARTERZAHNKRANZ 77 Z KPL. STARTER GEAR 77 T. ASSY.,..... | 1 |
| 15 | 865 638 | MAGNETGEHAEUSE KPL. MAGNETO HOUSING ASSY.,..... | 1 |
| 16 | 865 810 | LICHTANKER 110 W LIGHTING COIL W. CABLES, 110W..... | 1 |
| 17 | 865 805 | LADEGENERATORANKER KPL. CHARGING COIL W. CABLE..... | 2 |
| 18 | 847 245 | DISTANZBUECHSE 5,4/11/12 DISTANCE SLEEVE 5,4/11/12..... | 2 |
| 19 | 847 310 | DISTANZRING 5,4/10/3 DISTANCE RING 5,4/10/3..... | 4 |
| 20 | 866 780 | ANKERABSTUETZUNG / ARMATURE SUPPORT..... | 2 |
| 21 | 940 441 | ZYL.SCHRAUBE M5X40 DIN 84 SLOTTED HEAD SCREW M5X40..... | 4 |

FOR HISTORICAL REFERENCE PURPOSES ONLY. NO WARRANTY IS MADE. INFORMATION MAY BE OUTDATED!

| BILD-NR. ILL. NO. | TEILE-NR. PART NO. | B E Z E I C H N U N G D E S C R I P T I O N | STUECK QTY. |
|----------------------|-----------------------|--|-----------------|
| 22 | 827 890 | VIERKANTSCHIEBE 5,2 / SQUARE WASHER 5,2.. | 2 |
| 23 | 945 750 | FEDERRING A5 DIN 128 / LOCK WASHER A5..... | 2 |
| 24 | 240 180 | ZYL.SCHRAUBE M5X20 DIN 912 ALLEN SCREW M5X20..... ANZUGSDREHMOMENT 6 NM TIGHTENING TORQUE 6 NM (4,5 FT.LB.) | 2 |
| 25 | 899 785 | SCHRAUBENSICHERUNG NIEDRIGFEST LOCTITE 221 VIOLET 10 CC.,..... LOCTITE 221, 10 CCM., LOW STRENGTH BOND | N BED AS REQ |
| 26 | 899 738 | LOCTITE 648 GRUEN LOCTITE 648 GREEN 5 GR.,..... SCHRAUBENSICHERUNG FEST HIGH STRENGTH BOND | N BED AS REQ |
| 27 | | • SCHMIERFETT BP-ENERGREASE LS3 | N BED AS REQ |

FOR HISTORICAL REFERENCE PURPOSES ONLY, ENGINE IS NO LONGER IN PRODUCTION. INFO MAY BE OUTDATED!

E-STARTER ELECTRIC STARTER



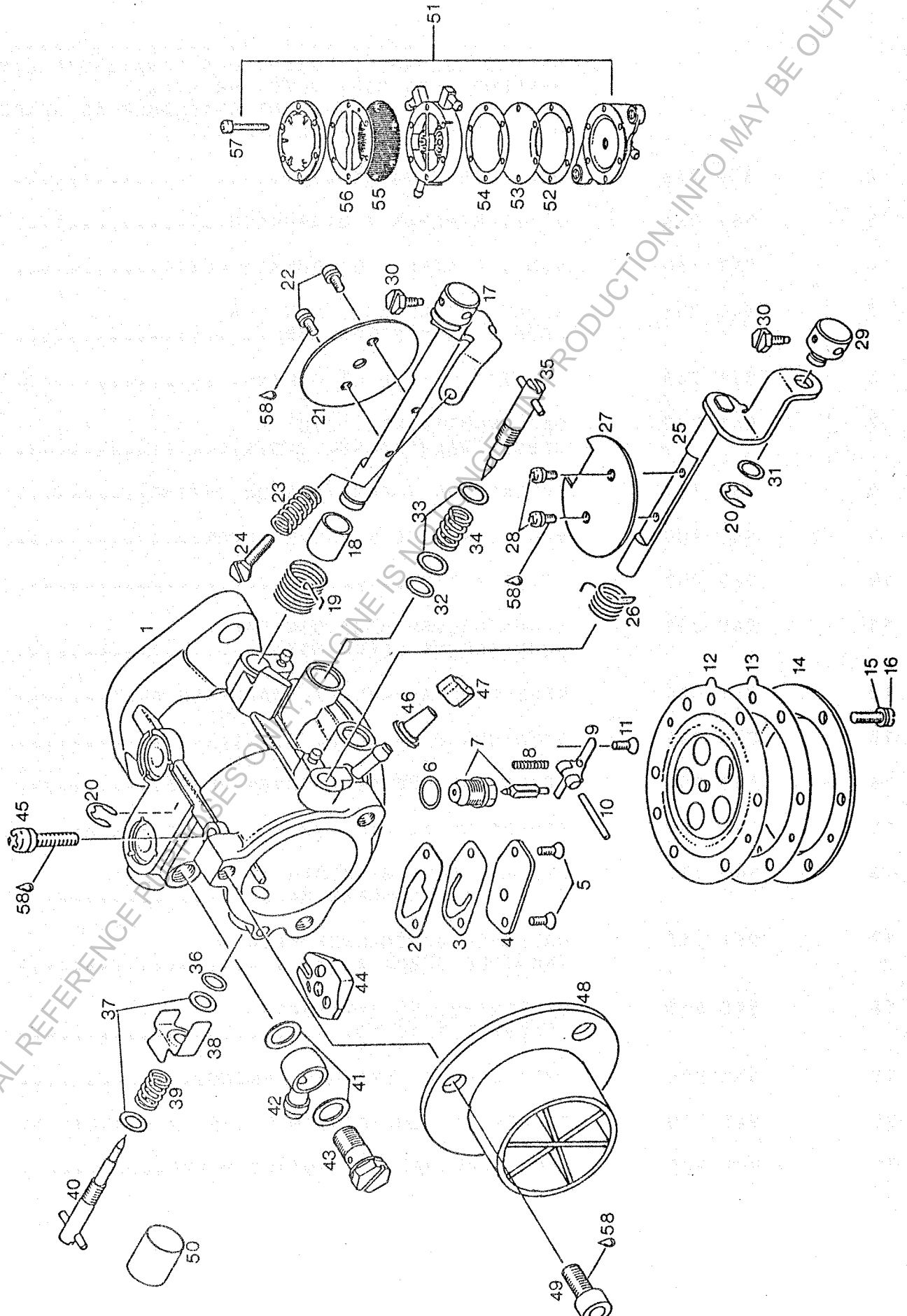
| BILD-NR. ILL. NO. | TEILE-NR. PART NO. | B E Z E I C H N U N G D E S C R I P T I O N | STUECK QTY. |
|----------------------|-----------------------|---|----------------|
| 1 | 992 807 | SCHRAUBTRIEB-STARTER KPL. ELECTR. STARTER ASSY..... | 1 |
| 2 | 992 815 | ANLASSER-RELAIS KPL. / RELAY ASSY.,..... | 1 |
| 3 | 853 767 | STARTERWINKEL / STARTER BRACKET..... | 1 |
| 4 | 847 465 | DISTANZROHR 8,4/15/24,3 DISTANCE SLEEVE 8,4/15/24,3..... | 2 |
| 5 | 250 311 | SCHEIBE 8,4 DIN 125 / WASHER 8,4..... | 2 |
| 6 | 945 752 | FEDERRING A8 DIN 128 / LOCK-WASHER A8.... | 4 |
| 7 | 242 201 | SK-MUTTER M8 DIN 934 / HEX. NUT M8..... ANZUGSDREHMOMENT 20 NM TIGHTENING TORQUE 20 NM (15 FT.LB.) | 4 |
| 8 | 940 481 | SK-SCHRAUBE M8X30 DIN 933 HEX. SCREW M8X30..... ANZUGSDREHMOMENT 20 NM TIGHTENING TORQUE 20 NM (15 FT.LB.) | 2 |

| BILD-NR. | TEILE-NR. | B E Z E I C H N U N G | STUECK |
|----------|-----------|-----------------------|--------|
| ILL. NO. | PART NO. | D E S C R I P T I O N | QTY. |

| | | | |
|----|---------|--|-----------------|
| 9 | 841 510 | TAPTITE-SCHRAUBE 1/4-20UNCX3/4 TAPTITE SCREW 1/4-20UNCX3/4..... | 1 |
| | | ANZUGSDREHMOMENT 10 NM TIGHTENING TORQUE 10 NM (7 FT.LB.) | |
| 10 | 297 386 | SILASTIC 732 RTV SILASTIC 732 RTV / 100 GR.,..... | N BED AS REQ |
| | | 100 GR., | |
| 11 | | • | N BED AS REQ |
| | | SCHMIERFETT BP-ENERGREASE LS3 | |

FOR HISTORICAL REFERENCE PURPOSES ONLY, ENGINE IS NO LONGER IN PRODUCTION. INFO MAY BE OUTDATED!

MIKUNI VERGASER BN 38
MIKUNI CARBURETOR BN 38



| BILD-NR. | TEILE-NR. | B E Z E I C H N U N G | STUECK |
|----------|-----------|-----------------------|--------|
| ILL. NO. | PART NO. | D E S C R I P T I O N | QTY. |

| | | | |
|--------|---------|---|---|
| 1 - 47 | 995 958 | MIKUNI-VERGASER / MIKUNI-CARBURETOR..... | 1 |
| 1 | | <p>..... 1</p> <p>VERGASERGEHAEUSE, NICHT ALS ERSATZTEIL LIEFERBAR.</p> <p>VERWENDE 995 955, VERGASER KPL.,</p> <p>CARBURETOR HOUSING, NOT AVAILABLE AS SPARE PART.</p> <p>USE 995 955, CARBURETOR ASSY.,</p> | |
| 2 | 850 746 | DICHTUNG / GASKET..... | 1 |
| 3 | 961 086 | VENTILMEMBRAN / DIAPHRAGM..... | 1 |
| 4 | 961 160 | VENTILPLATTE / DIAPHRAGM PLATE..... | 1 |
| 5 | 940 291 | SENKSCHRAUBE M3X6 DIN 966 COUNTERSUNK SCREW M3X6..... | 2 |
| 6 | 831 900 | DICHTRING / SEALING RING..... | 1 |
| 7 | 961 090 | NADELVENTIL KPL. 2,0 NEEDLE VALVE ASSY. 2,0..... | 1 |
| 8 | 939 105 | DRUCKFEDER / COMPRESSION SPRING..... | 1 |
| 9 | 961 100 | REGULIERHEBEL / VALVE LEVER..... | 1 |
| 10 | 929 905 | STIFT / PIN..... | 1 |
| 11 | 940 291 | SENKSCHRAUBE M3X6 DIN 966 COUNTERSUNK SCREW M3X6..... | 1 |
| 12 | 961 084 | REGELMEMBRAN KPL. / DIAPHRAGM ASSY..... | 1 |
| 13 | 850 744 | DICHTUNG / GASKET..... | 1 |
| 14 | 963 555 | VERSCHLUSSDECKEL / COVER PLATE..... | 1 |
| 15 | 945 758 | FEDERRING A4 DIN 128 / LOCK WASHER A4.... | 6 |
| 16 | 940 235 | ZYL.SCHRAUBE M4X8 DIN 84 SLOTTED HEAD SCREW M4X8..... | 6 |
| 17 | 961 115 | DROSSELKLAPPENACHSE KPL. THROTTLE SHAFT ASSY.,..... | 1 |
| 18 | 847 632 | DISTANZHUELSE 8,1/10/13 SPACER 8,1/10/13..... | 1 |
| 19 | 833 026 | SPIRALFEDER / RETURN SPRING..... | 1 |
| 20 | 945 710 | SICHERUNGSSCHEIBE 5 DIN 6799 / CIRCLIP 5. | 2 |
| 21 | 961 125 | DROSSELKLAPPE / THROTTLE VALVE..... | 1 |

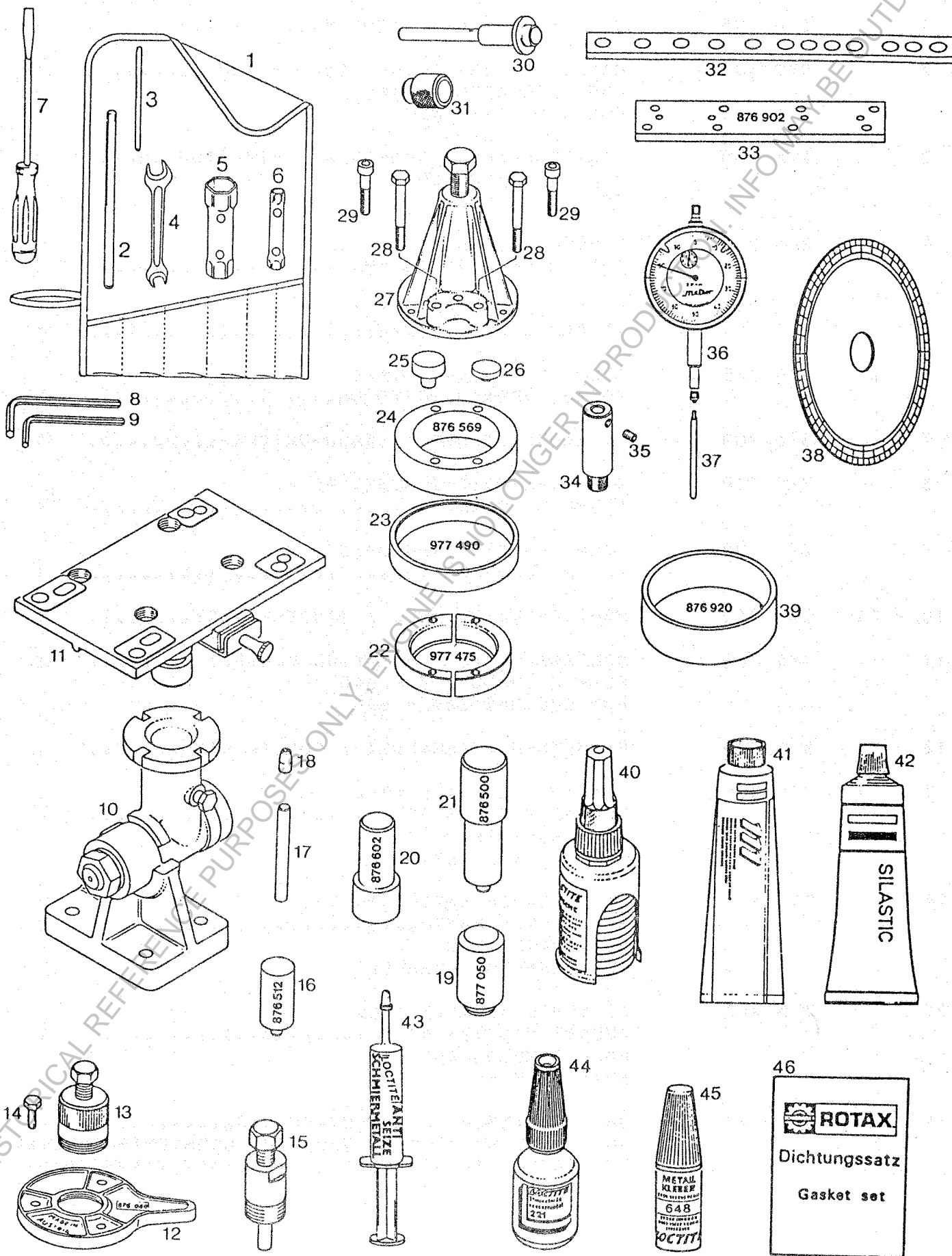
FOR HISTORICAL REFERENCE PURPOSES ONLY. ENGINEERS NO LONGER IN PRODUCTION INFO MAY BE OUTDATED!

| STÜCK-NR. | TEILE-NR. | B E Z E I C H N U N G | STÜCK |
|-----------|-----------|-----------------------|-------|
| ILL. NO. | PART NO. | D E S C R I P T I O N | QTY. |

| | | | |
|----|---------|--|---|
| 22 | 841 620 | KOMBISCHRAUBE M3X8 / COMBINED SCREW M3X8. | 2 |
| 23 | 939 100 | DRUCKFEDER / COMPRESSION SPRING..... | 1 |
| 24 | 840 120 | LEERLAUF-REGULIERSCHRAUBE IDLE-SPEED SCREW..... | 1 |
| 25 | 961 110 | STARTKLAPPENACHSE KPL. CHOKE SHAFT ASSY..... | 1 |
| 26 | 838 024 | SPIRALFEDER / RETURN SPRING..... | 1 |
| 27 | 961 120 | STARTKLAPPE / CHOKE VALVE..... | 1 |
| 28 | 241 030 | KOMBISCHRAUBE M3X6 / COMBINED SCREW M3X6. | 2 |
| 29 | 999 325 | SEILNIPPEL / TERMINAL..... | 1 |
| 30 | 940 041 | SK-SCHRAUBE M4X10 DIN 933 HEX. SCREW M4X10..... | 2 |
| 31 | 830 890 | DICHTRING 6,2/8,9/1 GASKET RING 6,2/8,9/1..... | 1 |
| 32 | 430 200 | O-RING 6,4-1,8 NBR 70-80 SH O-RING 6,4-1,8..... | 1 |
| 33 | 227 505 | DICHTRING 6,1/10/1 / GASKET RING 6,1/10/1 | 2 |
| 34 | 939 102 | DRUCKFEDER / COMPRESSION SPRING..... | 1 |
| 35 | 961 150 | REGULIERSCHRAUBE / ADJUSTMENT SCREW..... FUER LEERLAUFDUESE FOR IDLE JET | 1 |
| 36 | 831 925 | O-RING 5-2 NBR 70-80 SH O-RING 5-2 NBR 70-80 SH..... | 1 |
| 37 | 927 230 | DICHTRING A 5X9 DIN 7603 GASKET RING 5X9..... | 2 |
| 38 | 845 380 | FIXIERUNG / MAIN JET LOCKING..... | 1 |
| 39 | 939 104 | DRUCKFEDER / COMPRESSION SPRING..... | 1 |
| 40 | 961 152 | REGULIERSCHRAUBE / ADJUSTMENT SCREW..... FUER HAUPTDUESE FOR MAIN JET | 1 |
| 41 | 930 560 | DICHTRING 8,1/12/1 / GASKET RING 8,1/12/1 | 2 |
| 42 | 963 892 | SCHLAUCHSCHWENKANSCHLUSS / BANJO..... | 1 |
| 43 | 961 130 | ABSCHLUSSSCHRAUBE / PLUG SCREW..... | 1 |

| TEIL-NR. | TEILE-NR. | B E Z E I C H N U N G | STUECK |
|----------|-----------|--|----------------------------|
| ILL. NO. | PART NO. | D E S C R I P T I O N | QTY. |
| 44 | | <p>..... N BED</p> <p>..... AS REQ</p> <p>STARTKLAPPEN-FUEHRUNG, NICHT ALS ERSATZTEIL LIEFER</p> <p>BAR. VERWENDE 995 955, VERGASER KPL.,</p> <p>CHOKE BODY, NOT AVAILABLE AS SPARE PART. USE</p> <p>995 955, CABURETOR ASSY.,</p> | |
| 45 | 240 455 | <p>KOMBISCHRAUBE M5X14</p> <p>COMBINED SCREW M5X14.....</p> | 1 |
| 46 | 860 240 | SCHUTZSTOPFEN / PLUG..... | 1 |
| 47 | 853 345 | 2-CHR-KLEMME 5-7 MM / CLAMP 5-7 MM..... | 1 |
| 48 | 925 885 | <p>FILTERSTUTZEN KPL.</p> <p>.....</p> | 1 |
| 49 | 340 371 | <p>ZYL.SCHRAUBE M6X11,5</p> <p>ALLEN SCREW M6X11,5.....</p> <p>ANZUGSDREHMOMENT 10 NM</p> <p>TIGHTENING TORQUE 10 NM (7 FT.LB.)</p> | 3 |
| 50 | 860 182 | <p>SCHRUMPFSCHLAUCH 15 MM</p> <p>SHRINKING TUBE 15 MM.....</p> <p>FUER HAUTDUESEN-REGULIERSCHRAUBE</p> <p>FOR MAIN JET ADJUSTMENT SCREW</p> | 1 |
| 51 | 994 485 | <p>MIKUNI-PUMPE DF 52-48</p> <p>MIKUNI-FUEL PUMP DF 52-48.....</p> | 1 |
| 52 | 850 440 | DICHTUNG / GASKET..... | 1 |
| 53 | 861 210 | PUMPENMEMBRANE / DIAPHRAGM..... | 1 |
| 54 | 850 445 | DICHTUNG / GASKET..... | 1 |
| 55 | 861 215 | PUMPENMEMBRANE / DIAPHRAGM..... | 1 |
| 56 | 850 450 | DICHTUNG / GASKET..... | 1 |
| 57 | 841 035 | <p>KOMBISCHRAUBE M4X28</p> <p>COMBINED SCREW M4X28.....</p> | 6 |
| 58 | 899 785 | <p>SCHRAUBENSICHERUNG NIEDRIGFEST</p> <p>LOCTITE 221 VIOLET 10 CC.,.....</p> <p>LOW STRENGTH BOND</p> | <p>N BED</p> <p>AS REQ</p> |

REPARATURWERKZEUGE, DICHTUNGSSATZ REPAIR TOOLS, GASKET SET



| BILD-NR. | TEILE-NR. | B E Z E I C H N U N G | STUECK |
|----------|-----------|-----------------------|--------|
| ILL. NO. | PART NO. | D E S C R I P T I O N | QTY. |

| | | | |
|---------|---------|--|---|
| 1 - 9 | 876 592 | WERKZEUGSATZ / TOOL KIT..... | 1 |
| 1 | 876 195 | WERKZEUGTASCHE / TOOL BAG..... | 1 |
| 2 | 977 420 | HANDGRIFF 8X130-10 / BOLT 8X130..... FUER STECKSCHLUESSEL FOR SOCKET WRENCH | 1 |
| 3 | 876 640 | FIXIERBOLZEN / CRANKSHAFT FIXATION BOLT.. FUER KURBELWELLE FOR CRANKSHAFT | 1 |
| 4 | 276 065 | DOPPELMAULSCHLUESSEL 10X13 FORK WRENCH 10X13 MM..... | 1 |
| 5 | 876 212 | STECKSCHLUESSEL 21X26 SOCKET WRENCH 21X26..... | 1 |
| 6 | 876 225 | STECKSCHLUESSEL 10X13 SOCKET WRENCH 10/13 MM..... | 1 |
| 7 | 876 200 | SCHRAUBENZIEHER / SCREW DRIVER..... | 1 |
| 8 | 277 310 | SECHSKANTSTIFTSCHLUESSEL 6 ALLEN HEAD KEY 6..... | 1 |
| 9 | 277 790 | SECHSKANTSTIFTSCHLUESSEL 4 ALLEN HEAD KEY 4..... | 1 |
| 10 - 11 | 876 740 | MONTAGEPLATTE KPL. / TRESTLE ASSY.,..... | 1 |
| 11 | 876 745 | MONTAGEPLATTE / MOUNTING PLATE..... FUER MOTOREN 247 - 640 FOR ENGINES 247 - 640 | 1 |
| 12 | 876 080 | MAGNETGEHAEUSEHALTER / PULLER RING..... | 1 |
| 13 | 876 065 | ABZIEHER M42X1,5 KPL. PULLER M42X1,5 ASSY.,..... FUER MAGNETRAD FOR MAGNETO FLYWHEEL | 1 |
| 14 | 940 581 | SK-SCHRAUBE M8X16 DIN 933 HEX. SCREW M8X16..... FUER MAGNETRAD FOR MAGNETO FLYWHEEL | 3 |
| 15 | 276 447 | ABZIEHER M30X1,5 KPL. PULLER M30X1,5 ASSY.,..... FUER SCHWUNGRAD FOR FLYWHEEL | 1 |
| 16 | 876 512 | MONTAGESTEMPEL / INSERTION JIG..... FUER INNEREN WD-RING 850 170, DREHSCHIEBERWELLE FOR INNER OIL SEAL 850 170, ROTARY VALVE SHAFT | 1 |

FOR HISTORICAL REFERENCE PURPOSES ONLY. ENGINE IS NO LONGER IN PRODUCTION. INFO MAY BE OUTDATED!

| BILD-NR. | TEILE-NR. | B E Z E I C H N U N G | STUECK |
|----------|-----------|-----------------------|--------|
| ILL. NO. | PART NO. | D E S C R I P T I O N | QTY. |

| | | | |
|----|---------|---|---|
| 17 | 876 612 | AUSPRESSDORN / EXTRUSION JIG..... FUER DREHSCHIEBERWELLE FOR ROTARY VALVE SHAFT | 1 |
| 18 | 876 930 | FUEHRUNGSHUELSE / GUIDE SLEEVE..... FUER WD-RING 850 710, DREHSCHIEBERWELLE FOR OIL SEAL 850 710, ROTARY VALVE SHAFT | 1 |
| 19 | 877 050 | MONTAGESTEMPEL / INSERTION JIG..... FUER AEUSSEREN WD-RING 850 710, DREHSCHIEBERWELLE FOR OUTER OIL SEAL 850 710, ROTARY VALVE SHAFT | 1 |
| 20 | 876 602 | MONTAGESTEMPEL / INSERTION JIG..... FUER DREHSCHIEBERWELLE KPL. FOR ROTARY VALVE SHAFT ASSY., | 1 |
| 21 | 876 500 | MONTAGESTEMPEL / INSERTION JIG..... FUER RK-LAGER 932 797, DREHSCHIEBERWELLE FOR BALL BEARING 932 797, ROTARY VALVE SHAFT | 1 |
| 22 | 977 475 | RINGHAELFTE / RING HALF..... FUER LAGER 832 231 UND 932 085, KURBELWELLE ABTRIEBSEITIG UND MAGNETSEITIG FOR BEARING 832 231 AND 932 035, CRANKSHAFT P.T.O. AND MAGNETO SIDE | 2 |
| 23 | 977 490 | RING / RING..... FUER RINGHAELFTE FOR RINGHALF | 1 |
| 24 | 876 569 | ZWISCHENRING 72/105/28 DISTANCE RING 72/105/28..... FUER ABZIEHER FOR PULLER | 1 |
| 25 | 876 552 | SCHUTZPILZ / PROTECTION MUSHROOM..... FUER KURBELWELLE ABTRIEBSEITIG FOR CRANKSHAFT P.T.O. SIDE | 1 |
| 26 | 876 557 | SCHUTZPILZ / PROTECTION MUSHROOM..... FUER KURBELWELLE MAGNETSEITIG FOR CRANKSHAFT MAGNETO SIDE | 1 |
| 27 | 876 298 | ABZIEHER KPL. / PULLER ASSY.,..... FUER KUGELLAGER KURBELWELLE | 1 |
| 28 | 841 200 | SK-SCHRAUBE M8X70 DIN 931 HEX. SCREW M8X70..... FUER ABZIEHER FOR PULLER | 4 |
| 29 | 340 681 | ZYL.SCHRAUBE M8X40 DIN 912 ALLEN SCREW M8X40..... FUER ABZIEHER FOR PULLER | 4 |

| BILD-NR. | TEILE-NR. | B E Z E I C H N U N G | STUECK |
|----------|-----------|-----------------------|--------|
| ILL. NO. | PART NO. | D E S C R I P T I O N | QTY. |

| | | | |
|---------|---------|---|-----------------|
| 30 - 31 | 877 015 | MONTAGEDORN KPL. CIRCLIP INSTALLATION TOOL ASSY.,..... FUER NULLHAKENRING FOR CIRCLIP | 1 |
| 30 | 877 010 | MONTAGEDORN CIRCLIP INSTALLATION PUSHER 13MM..... | 1 |
| 31 | 877 020 | MONTAGEHUELSE CIRCLIP INSTALLATION SLEEVE 13MM..... | 1 |
| 32 | 876 570 | ZENTRIERLEISTE / ALIGNING TOOL..... FUER ZYLINDER FOR CYLINDER | 2 |
| 33 | 876 902 | ZENTRIERLEISTE / ALIGNING TOOL..... FUER ZYLINDER-AUSPUFFFLANSCH FOR CYLINDER-EXHAUST-FLANGE | 1 |
| 34 | 376 940 | MESSUHRADAPTER / GAUGE ADAPTER..... | 1 |
| 35 | 841 771 | GEWINDESTIFT M6X8 DIN 913 SET SCREW M6X8..... | 1 |
| 36 | 876 950 | PRAEZISIONS-MESSUHR / PRECISION GAUGE..... 1 MM KOLBENWEG ENTSPRICHT 1,019 MM AUF DER UHR 1 MM OF PISTON PATH CORRESPONDS TO 1,019 MM AT PRECISION GAUGE | 1 |
| 37 | 876 947 | MESSUHRVERLAENGERUNG / GAUGE PIN 52 MM... | 1 |
| 38 | 277 150 | GRADSCHEIBE / DEGREE DISK..... | 1 |
| 39 | 876 920 | ZENTRIERRING / CENTERRING RING..... FUER MZ-GENERATOR FOR MAGNETO GENERATOR | 1 |
| 40 | 899 784 | LOCTITE 574 LOCTITE 574 ORANGE 50 CC.,..... FLAECHENDICHTMITTEL SEALING COMPOUND | N BED AS REQ |
| 41 | 897 161 | MOLYKOTE 111 MOLYKOTE 111, 100 GR.,..... SILIKONFETT 100 GR., SILICONE GREASE 100 GR., | N BED AS REQ |
| 42 | 297 386 | SILASTIC 732 RTV SILASTIC 732 RTV / 100 GR.,..... 100 GR., | N BED AS REQ |
| 43 | 297 431 | LOCTITE ANTI-SEIZE 76710 LOCTITE ANTI-SEIZE 10 GR.,..... ZUR VERHINDERUNG VON PASSUNGSROST TO PREVENT METAL GALLING | N BED AS REQ |

FOR HISTORICAL REFERENCE PURPOSES ONLY. ENGINE IS NO LONGER IN PRODUCTION. INFO MAY BE OUTDATED!

| BILD-NR. ILL. NO. | TEILE-NR. PART NO. | B E Z E I C H N U N G D E S C R I P T I O N | STUECK QTY. |
|----------------------|-----------------------|---|-----------------|
| 44 | 899 785 | SCHRAUBENSICHERUNG NIEDRIGFEST LOCTITE 221 VIOLET 10 CC.,..... LOCTITE 221, 10 CCM., LOW STRENGTH BOND | N BED AS REQ |
| 45 | 899 788 | LOCTITE 648 GRUEN LOCTITE 648 GREEN 5 GR.,..... SCHRAUBENSICHERUNG HOCHFEST HIGH STRENGTH BOND | N BED AS REQ |
| 46 | 994 429 | DICHTUNGSSATZ / GASKET SET..... | 1 |

FOR HISTORICAL REFERENCE PURPOSES ONLY, ENGINE IS NO LONGER IN PRODUCTION. INFO MAY BE OUTDATED!

FOR HISTORICAL REFERENCE PURPOSES ONLY, ENGINE IS NO LONGER IN PRODUCTION. INFO MAY BE OUTDATED!