

BRP-Rotax

ILLUSTRATED PARTS CATALOG

Chapter) LEP

LIST OF EFFECTIVE PAGES

Chapter	Page	Date
	Title page	Nov. 01 2016
TOC	TOC -1 TOC- 2	Nov. 01 2016 Nov. 01 2016
LEP	LEP - 1 LEP - 2	June 01 2018 March 01 2017
TOA	RV - 1 RV - 2	June 01 2018 June 01 2018
00-00-00	1 2 3 4 5 6 7 8 9 10 11 12 13 14 15 16 17 18 19 20	Nov. 01 2016 Nov. 01 2016 Nov. 01 2016 Nov. 01 2016 Nov. 01 2016 Nov. 01 2016 Nov. 01 2016 Nov. 01 2016 Nov. 01 2016 Nov. 01 2016 Nov. 01 2016 Nov. 01 2016 Nov. 01 2016 Nov. 01 2016 Nov. 01 2016 Nov. 01 2016 Nov. 01 2016 June 01 2018 June 01 2018 Nov. 01 2016
24-20-00	1 2 3 4	Nov. 01 2016 Nov. 01 2016 Nov. 01 2016 Nov. 01 2016
24-30-00	1 2 3 4	Nov. 01 2016 Nov. 01 2016 Nov. 01 2016 Nov. 01 2016
37-10-00	1 2 3 4	Nov. 01 2016 Nov. 01 2016 Nov. 01 2016 Nov. 01 2016

Chapter	Page	Date
61-20-00	1 2 3 4	Nov. 01 2016 Nov. 01 2016 Nov. 01 2016 Nov. 01 2016
71-20-00	1 2 3 4	Nov. 01 2016 Nov. 01 2016 Nov. 01 2016 Nov. 01 2016
72-10-00	1 2 3 4 5 6 7 8	Nov. 01 2016 June 01 2018 June 01 2018 June 01 2018 Nov. 01 2016 Nov. 01 2016 June 01 2018 Nov. 01 2016
72-20-00	1 2 3 4 5 6 7 8 9 10 11 12 13 14	Nov. 01 2016 Nov. 01 2016 Nov. 01 2016 Nov. 01 2016 Nov. 01 2016 Nov. 01 2016 Nov. 01 2016 Nov. 01 2016 Nov. 01 2016 Nov. 01 2016 Nov. 01 2016 Nov. 01 2016 Nov. 01 2016 Nov. 01 2016

d06639.fm

BRP-Rotax

ILLUSTRATED PARTS CATALOG

Chapter	Page	Date
73-10-00	1	Nov. 01 2016
	2	Nov. 01 2016
	3	Nov. 01 2016
	4	Nov. 01 2016
	5	Nov. 01 2016
	6	Nov. 01 2016
	7	Nov. 01 2016
	8	Nov. 01 2016
	9	Nov. 01 2016
	10	Nov. 01 2016
	11	Nov. 01 2016
	12	Nov. 01 2016
	13	Nov. 01 2016
	14	Nov. 01 2016
	15	Nov. 01 2016
	16	Nov. 01 2016
74-20-00	1	Nov. 01 2016
	2	Nov. 01 2016
	3	Nov. 01 2016
	4	Nov. 01 2016
	5	Nov. 01 2016
	6	Nov. 01 2016
75-20-00	1	Nov. 01 2016
	2	Nov. 01 2016
	3	Nov. 01 2016
	4	Nov. 01 2016
	5	Nov. 01 2016
	6	Nov. 01 2016
	7	Nov. 01 2016
	8	Nov. 01 2016
76-10-00	1	Nov. 01 2016
	2	Nov. 01 2016
	3	Nov. 01 2016
	4	Nov. 01 2016
76-50-00	1	Nov. 01 2016
	2	Nov. 01 2016
	3	Nov. 01 2016
	4	Nov. 01 2016
78-10-00	1	Nov. 01 2016
	2	Nov. 01 2016
	3	Nov. 01 2016
	4	Nov. 01 2016
	5	Nov. 01 2016
	6	Nov. 01 2016

Chapter	Page	Date
79-20-00	1	Nov. 01 2016
	2	Nov. 01 2016
	3	Nov. 01 2016
	4	Nov. 01 2016
	5	Nov. 01 2016
	6	Nov. 01 2016
	7	Nov. 01 2016
	8	Nov. 01 2016
	9	Nov. 01 2016
	10	Nov. 01 2016
80-10-00	1	March 01 2017
	2	March 01 2017
	3	March 01 2017
	4	March 01 2017

d06639.fm

BRP-Rotax

ILLUSTRATED PARTS CATALOG

Chapter) TOA

TABLE OF AMENDMENTS

Approval*

The technical content of this document is approved under the authority of DOA No. EASA.21J.048.

current no.	chapter	page	date of change	remark of approval	date of approval from authorities	date of issue	signature
0	TOC	all	Nov. 01 2016	DOA*			
0	LEP	all	Nov. 01 2016	DOA*			
0	TOA	all	Nov. 01 2016	DOA*			
0	00-00-00	all	Nov. 01 2016	DOA*			
0	24-20-00	all	Nov. 01 2016	DOA*			
0	24-30-00	all	Nov. 01 2016	DOA*			
0	37-10-00	all	Nov. 01 2016	DOA*			
0	61-20-00	all	Nov. 01 2016	DOA*			
0	71-20-00	all	Nov. 01 2016	DOA*			
0	72-10-00	all	Nov. 01 2016	DOA*			
0	72-20-00	all	Nov. 01 2016	DOA*			
0	73-10-00	all	Nov. 01 2016	DOA*			
0	74-20-00	all	Nov. 01 2016	DOA*			
0	75-20-00	all	Nov. 01 2016	DOA*			
0	76-10-00	all	Nov. 01 2016	DOA*			
0	76-50-00	all	Nov. 01 2016	DOA*			
0	78-10-00	all	Nov. 01 2016	DOA*			
0	79-20-00	all	Nov. 01 2016	DOA*			
0	80-10-00	all	Nov. 01 2016	DOA*			
1	LEP	all	March 01 2017	DOA*			
1	TOA	all	March 01 2017	DOA*			
1	80-10-00	all	March 01 2017	DOA*			
2	LEP	1	June 01 2018	DOA*			
2	TOA	all	June 01 2018	DOA*			
2	00-00-00	18,19	June 01 2018	DOA*			
2	72-10-00	2-4,7	June 01 2018	DOA*			

d06640.fm

BRP-Rotax

ILLUSTRATED PARTS CATALOG

Chapter) TOA

Content

Summary of the relevant amendments in this context, but makes no claim to completeness.

current no.	chapter	page	date of change	comments
0	all	all	Nov. 01 2016	New IPC layout, change company name
1	80-10-00	all	March 01 2017	- Removal of 0.9 kW HD-Starter (not tested for 912 iS / 912 iS Sport / 912 iSc Sport)
2 2	00-00-00 72-10-00	18,19 2-4,7	June 01 2018 June 01 2018	- Update of part number - New gear cover assy. with oil spray nozzle, update of part numbers

d06640.fm

BRP-Rotax

ILLUSTRATED PARTS CATALOG

LUBRICANT TOOLS

FIG. & ITEM NO.	STATUS	PART NO.	INDENT	Description	Parts per Engine		
					912 iS	912 iSc Sport	912 iS Sport
B		897651	.1	LOCTITE 243 BLUE, 10 CC.	AR	AR	AR
C		899788	.1	LOCTITE 648 GREEN, 5 GR.	AR	AR	AR
E		297434	.1	LOCTITE ANTI SEIZE 8151 50 ML.	AR	AR	AR
F		xxx	.1	LOCTITE 7063	AR	AR	AR
H		897870	.1	K&N FILTER OIL 99-11312	AR	AR	AR
I		897330	.1	LITHIUM-BASE GREASE, 250 GR.,	AR	AR	AR
O		xxx	.1	ENGINE OIL	AR	AR	AR
P		899791	.1	LOCTITE 5910, 50 ML	AR	AR	AR
R		297711	.1	PU-GLUE AS REQ, SIKALFEX255	AR	AR	AR
V		898570	.1	LOCKING PAINT	AR	AR	AR
Z		899789	.1	LOCTITE 603 GREEN, 10 CC.	AR	AR	AR
AG		897186	.1	SILICONE HEAT COMPOUND AS REQ WACKER P12, 150GR.	AR	AR	AR

- Items not illustrated

BRP-Rotax
 ILLUSTRATED PARTS CATALOG
GASKET SET, DOCUMENTATIONS



1



2



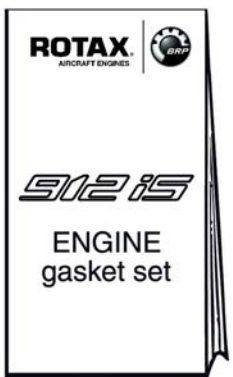
3



4



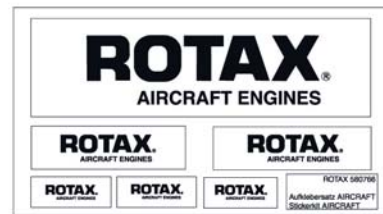
5



7



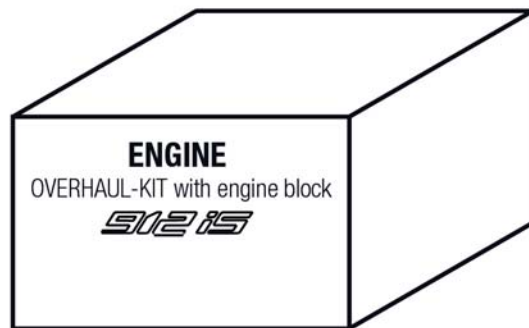
8



6



10



9

BRP-Rotax
 ILLUSTRATED PARTS CATALOG
GASKET SET, DOCUMENTATION

FIG. & ITEM NO.	STATUS	PART NO.	INDENT	Description	Parts per Engine		
					912 iS	912 iSc Sport	912 iS Sport
1	n.a.	898740	.1	OPERATORS MANUAL	1	1	1
2	n.a.	898647	.1	INSTALLATION MANUAL	1	1	1
3		899476	.1	ILLUSTRATED PARTS CATALOG	1	1	1
4	n.a.	898742	.1	MAINTENANCE MANUAL LINE	1	1	1
5	n.a.	898751	.1	MAINTENANCE MANUAL HEAVY	1	1	1
6		580683	.1	ROTAX STICKER KIT AIRCRAFT	1	1	1
7		686240	.1	GASKET SET	1	1	1
8		893850	.1	OVERHAUL-KIT	1	1	1
9		893246	.1	OVERHAUL-KIT WITH ENGINE BLOCK	1	1	1
10		xxx	.1	ENGINE BLOCK See chap. 72-20-00	1	1	1

- Items not illustrated

d06646.fm

BRP-Rotax
ILLUSTRATED PARTS CATALOG

NOTES

d06646.fm

BRP-Rotax

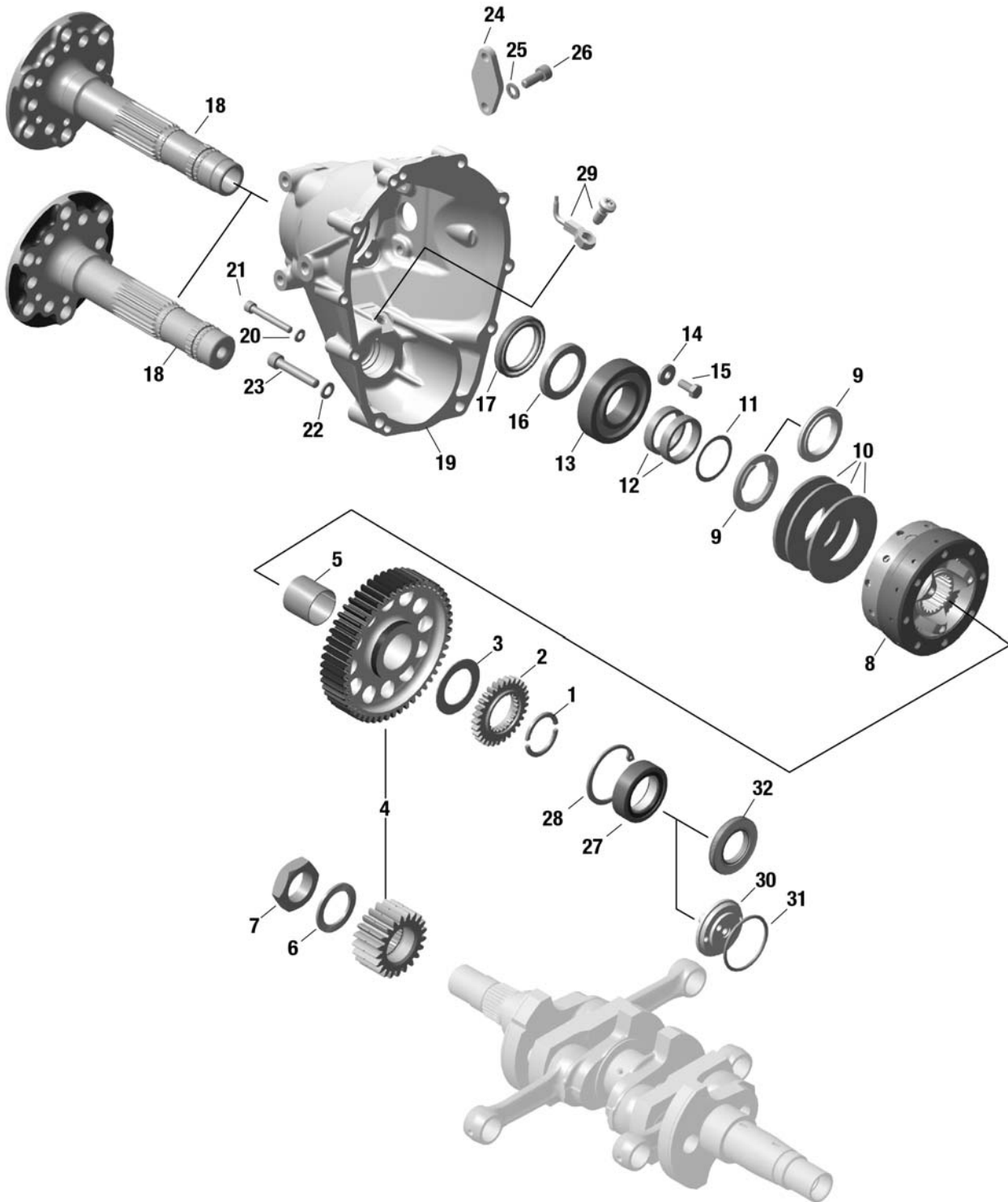
ILLUSTRATED PARTS CATALOG

NOTES

d06641.fm

BRP-Rotax

ILLUSTRATED PARTS CATALOG



AE 2IS_0690

Fig. 72-10-00-1

d06641.fm

BRP-Rotax

ILLUSTRATED PARTS CATALOG

Chapter) 72-10-00

PROPELLER GEAR ASSY. WITH OVERLOAD CLUTCH

FIG. & ITEM NO.	STATUS	PART NO.	INDENT	Description	Parts per Engine		
					912 iS	912 iSc Sport	912 iS Sport
1 1-29		893340	.1	GEARBOX WITH CLUTCH I 2.43-2 Version 2	1b		
		893341	.1	GEARBOX WITH CLUTCH I 2.43-2 Version 2		1a	1a
1-29		893345	.1	GEARBOX WITH CLUTCH I 2.43-2 Version 3	1b		
		893346	.1	GEARBOX WITH CLUTCH I 2.43-2 Version 3		1a	1a
1		926035	..2	RING HALF	2	2	2
2		834232	..2	DRIVE GEAR 29 T	1	1	1
3		827992	..2	THRUST WASHER 33.2/51/1.2	1	1	1
4		886518	..2	GEAR SET I 2.43	1	1	1
5		933362	..2	BUSHING 31x33x29.8	1	1	1
6		845431	..2	FRICTION WASHER VS30	1	1	1
7		842579	..2	HEX. NUT M30x1.5 12 MM LH	1	1	1
8		996915	..2	OVERLOAD CLUTCH ASSY.	1b		
8		996916	..2	OVERLOAD CLUTCH ASSY.		1a	
9	s.v. N	847786 847787	..2	STEP COLLAR	1c	1c	1c
10		838216	..2	DISK SPRING B80 80x41x3	3	3	3
11		927401	..2	SHIM 35.4/43/0.2	AR	AR	AR
11		927402	..2	SHIM 35.4/43/0.5	AR	AR	AR
11		927403	..2	SHIM 35.4/43/1.0	AR	AR	AR
12		847687	..2	SPACER 35.2/42/8	2	2	2
13		832578	..2	BALL BEARING 6207E TN9 35-72-17	1	1	1
14		944320	..2	WASHER 7.2/18.8/3	4	4	4

- Items not illustrated

d06641.fm

BRP-Rotax

ILLUSTRATED PARTS CATALOG

FIG. & ITEM NO.	STATUS	PART NO.	INDENT	Description	Parts per Engine		
					912 iS	912 iSc Sport	912 iS Sport
15		941760	..2	HEX. SCREW M7x16	4	4	4
16		926022	..2	SPACER RING 36/50/5.5	1	1	1
17		950470	..2	OIL SEAL AS 40x55x7 FPM	1	1	1
18		937046	..2	PROPELLER SHAFT Version 2	1	1	1
18		937045	..2	PROPELLER SHAFT Version 3	1	1	1
19		811959	..2	GEAR COVER ASSY.	1c	1c	1c
20		827962	..2	WASHER 6.4	8	8	8
21	s.v. N	241821 241823	..2	ALLEN SCREW M6x45	8	8	8
22		944131	..2	WASHER 8 ISO 7092-300 HV	2	2	2
23	s.v. s.v.	841561 841562	..2	ALLEN SCREW M8x45	2d	2d	2d
23	N	940077	..2	HEX./TORX SCREW M8x45	2	2	2
24		926151	..2	COVER	1	1	1
25		945752	..2	LOCK WASHER A8	2	2	2
26		940592	..2	HEX. SCREW M8x20	2	2	2
27		232241	..2	ROLLER BEARING 205 E C3 25-52-15	1	1	1
28		945820	..2	RETAINING RING 52x2	1	1	1
29		456520	.1	OIL SPRAY NOZZLE ASSY.	1c	1c	1c
30		810301	.1	OIL INLET FLANGE	1	1	1
31		430175	.1	O-RING 46x3	1	1	1
32		950200	.1	OIL SEAL AS 30x52x7 FPM	1	1	1

- Items not illustrated

- a break away torque 700-900 Nm (516-663 ft lb.)
- b break away torque 600-800 Nm (442-590 ft lb.)
- c Gearbox with oil spray nozzle, starting with gearbox S/N 74000
- d Replaced by hex. torx screw part no. 940077

d06641.fm

BRP-Rotax

ILLUSTRATED PARTS CATALOG

Chapter) 72-10-00 OVERLOAD CLUTCH

FIG. & ITEM NO.	STATUS	PART NO.	INDENT	Description	Parts per Engine		
					912 iS	912 iSc Sport	912 iS Sport
2 1-9		996915	.1	OVERLOAD CLUTCH ASSY.	1b		
1-9		996916	.1	OVERLOAD CLUTCH ASSY.		1a	1a
1		958912	..2	CLUTCH DRUM	1	1	1
2		958905	..2	CLUTCH HUB	1	1	1
3		944080	..2	THRUST WASHER 45.2/60/1	1	1	1
4		958926	..2	DOG HUB	1	1	1
5		958932	..2	STEEL FRICTION PLATE 1.0 MM	9	9	9
6		958945	..2	SINTER FRICTION PLATE 1.8 MM	8	8	8
7		958951	..2	SUPPORT RING	1	1	1
8		838161	..2	DISK SPRING 100X76X2.7	2	2	2
9		842644	..2	COLLAR NUT M102X1.5	1cd	1cd	1cd

- Items not illustrated

- a break away torque 700-900 Nm (516-663 ft lb.)
- b break away torque 600-800 Nm (442-590 ft lb.)
- c With additional bores to drain lead.
- d Improved centering of disc springs.

d06641.fm

BRP-Rotax

ILLUSTRATED PARTS CATALOG

NOTES

d06641.fm